

Métis Nation Data Strategy

October 2025

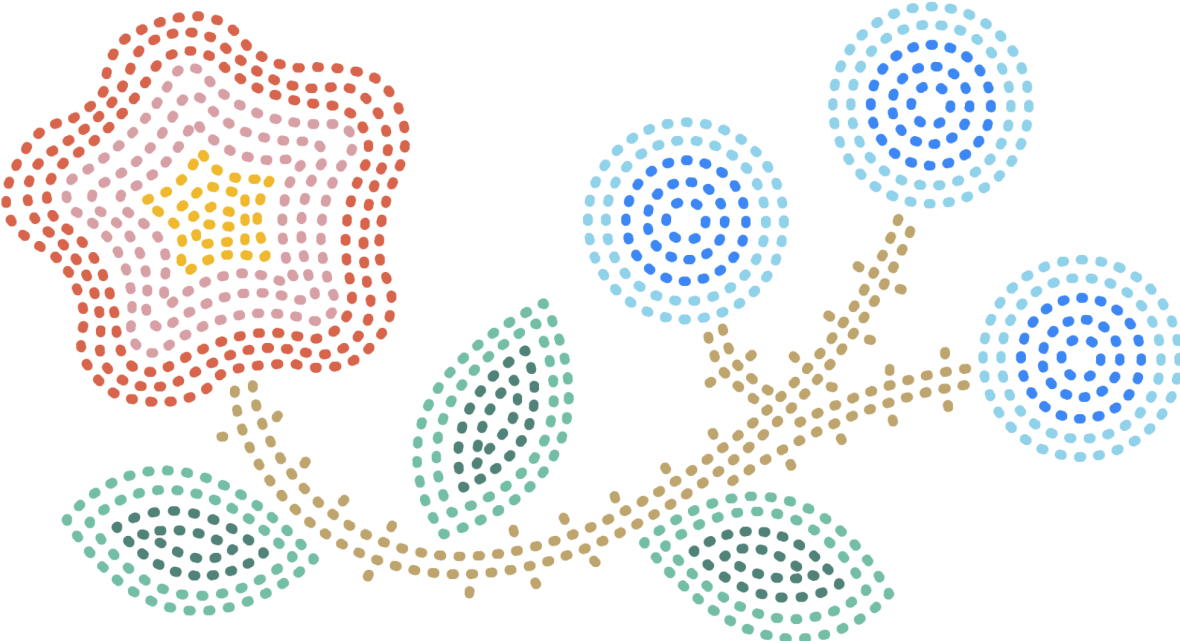


Table of Contents

October 2025	1
Table of Contents	2
Representation	3
Acknowledgements	3
Executive Summary	4
Key Terms & Definitions	9
1.0 : Introduction	11
1.1 : Who are the Métis Nation?	12
1.2 : What is the Métis Nation Data Strategy?	13
1.3 : Why is the Métis Nation Data Strategy Important?	13
1.4 : Who is this Strategy for?	14
1.5 : How was the Strategy Developed?	14
2.0 : Data Strategy Framework	16
2.1 : Vision	18
2.2 : Principles	18
2.3 : Themes and Outcomes	19
3.0 : Path Forward	27
3.1 : Structure and Roles	27
3.1.1 : Métis Government Data Units	28
3.1.2 : Métis Nation Data Network	29
3.1.3 : Launching Data Units and the Network	31
3.2 : Priorities	32
4.0 : Conclusion & Call to Action	36
Appendices	37
A : Acronyms List	37
B : Demonstration Projects	38



Representation

At the time of development, the Métis National Council’s Governing Members comprised of the following Métis Governments: Métis Nation-Saskatchewan, Otipemisiwak Métis Government of the Métis Nation within Alberta, Métis Nation British Columbia, and Métis Nation of Ontario. Engagements, contributions and language reflected in this document were informed by the perspectives and participation of these Governing Members during the drafting process.

Acknowledgements

This work would not have been possible without the collaboration, support, and willingness to work together of representatives from the Métis Nation British Columbia, Otipemisiwak Métis Government, Métis Nation-Saskatchewan, and Métis Nation of Ontario (“Contributing Métis Governments”).

Indigenous Services Canada (ISC) provided funding to the Métis National Council and Contributing Métis Governments to develop the Métis Nation Data Strategy through the **Transformational Approach to Indigenous Data (TAID)**.

● **TAID**, launched by ISC, is an important step forward in supporting Métis, First Nations, and Inuit governments in enhancing data capacity and advancing Indigenous data sovereignty. TAID is a “multi-year government commitment supporting First Nations, Inuit, and Métis Nations to develop the capacity they will need to collect, manage and use their own data for the benefit of their Peoples.”¹ The initiative recognizes that Indigenous Peoples have the inherent right to govern the collection, ownership, and use of our own data in alignment with our priorities, values, and practices and seeks to advance Indigenous interests in the data space.

¹Treasury Board of Canada Secretariat. 2023-2026 Data Strategy for the Federal Public Service. April 2023.



Executive Summary

The Métis are a distinct and rights-bearing Indigenous People in Canada, recognized under Section 35 of the *Constitution Act*, 1982. Métis are represented regionally by the Métis Nation British Columbia (MNBC), Otipemisiwak Métis Government (OMG), Métis Nation–Saskatchewan (MN-S), Manitoba Métis Federation (MMF), Métis Nation of Ontario (MNO), Metis Settlements General Council (MSGC), and Northwest Territories Métis Nation (NWTMN). The Métis National Council (MNC) advocates for the Métis Nation at the national and international levels and derives its mandate from its Governing Members.

Métis data interests have long been ignored and have received very little funding. Colonial data practices have harmed the Métis Nation. There is substantial work to be done both to begin to decolonize Métis Data, and to restore Métis Governments as the stewards of their Citizens' data. The Métis Nation Data Strategy (the “Strategy”) is intended to achieve these ends by laying out a path to Métis Data Sovereignty through the development of data capacity.

The Strategy has been developed by the MNC at the direction of and with substantial input from the Métis Nation Data Strategy Working Group (“the Working Group”) comprised of Technical and Senior Official representatives from each of the MNBC, OMG, MN-S, and MNO (“Contributing Métis Governments”). During the final stages of drafting the Strategy, both MN-S and MNBC withdrew from the MNC and the Working Group. While their input has been included in the Strategy, the final versions have not been reviewed or approved by either MN-S or MNBC.

The Strategy was developed under Phase 1 of the *Transformational Approach to Indigenous Data* (TAID). Phase 1 work consisted of three interrelated and mutually reinforcing parts: the **Data Strategy Framework** and the **Path Forward** (collectively, this Strategy), and the selection and development of a set of **Demonstration Projects** that were used to test and refine Strategy components while also addressing immediate data needs.



The *Data Strategy Framework* articulates a **Vision** for our ultimate destination:

“Grounded in our ways and stories, Métis Governments hold sovereignty over Métis Data, exercising our rights and self-determination to make informed decisions to improve the lives of our Citizens, families, and communities.”

A set of **Principles** provides guidance and wisdom to keep us moving in the direction of our Vision in accordance with Métis ways:

1. **Self-determination and Sovereignty:** Individually and collectively, center the rights to self-determination and data sovereignty in decision-making, respecting Métis Citizens' data rights and other Métis Governments' sovereignty.
2. **Practical:** Focus on solving current challenges through scalable and adaptable solutions, tools, and infrastructure, addressing immediate needs while contributing to the long-term Vision.
3. **Stewardship:** Respect, honour, and build the trust of Métis Citizens by treating data as sacred, never lying, obfuscating, or misleading.
4. **Métis Centered:** Make sure we can still see our world reflected when we use Western data tools.
5. **Reciprocity and Collaboration:** Leverage opportunities to work together, build on what others have done, and share what we have done.
6. **Innovative:** Be scrappy and inventive, developing new tools if existing ones cannot reflect our reality or meet our needs, and creatively leveraging everything at our disposal.

Themes represent the main areas of investment in tools and skills we need to safely and successfully achieve our Vision. Each Theme has an associated **Outcome** describing what those tools or skills look like in practice and illustrating what the achievement of our Vision could look like in concrete, tangible terms. Themes are presented in order according to the needs and priorities of Contributing Métis Governments and the sequence of investments needed to achieve our Outcomes and, ultimately, our Vision. The Themes and Outcomes are:



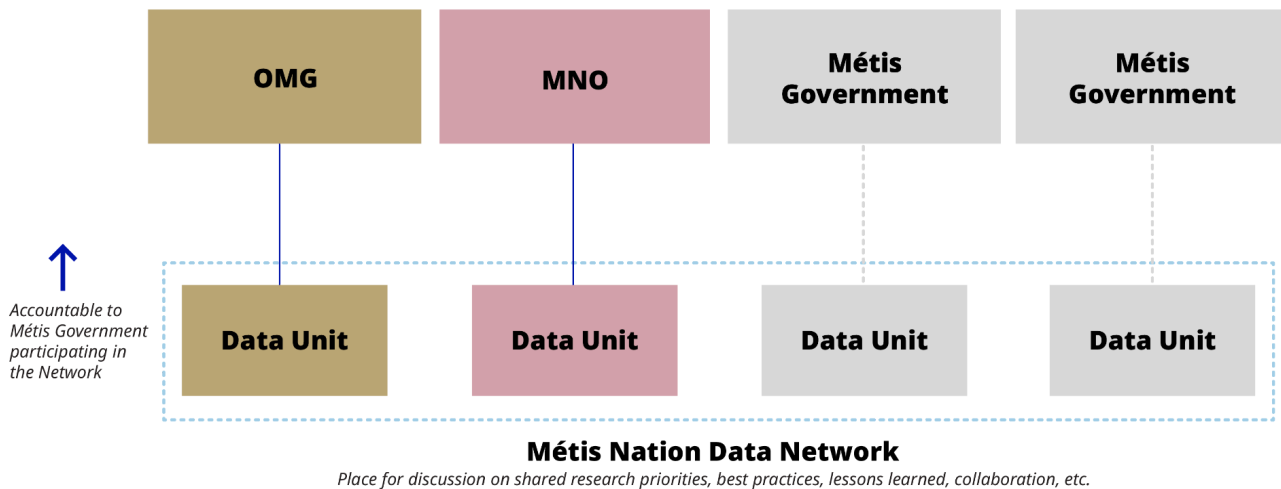
Theme	Outcome
Resourcing	The necessary financial resources are available to achieve our Vision.
Internal Data Capacity	Métis Governments and Institutions have the tools and skills to collect, manage, and use Métis Data for the benefit of Citizens and engage with external partners to develop systemic data capacity.
Partnerships and Collaboration	Capacity and resources are leveraged both internally, through collaboration, and externally by forming partnerships with external organizations.
Data Access, Acquisition, and Collection	Métis Governments know what data are necessary in a given circumstance and there are clear paths to effectively obtain, organize, use, and store those data, whether from primary or secondary sources.
Data Governance and Accountability	Policies and procedures exist and are implemented to govern Métis data collection, use, and stewardship in a manner aligned with Métis values and that builds trust with and respects Métis Citizens.
Data Standards	Data are organized consistently and in a way that benefits Métis Citizens, e.g. data standards effectively navigate the tensions and trade-offs inherent between regional and cultural specificity and the benefit of a collective voice.

Guided by the *Data Strategy Framework*, the *Path Forward* is the nuts-and-bolts part of the Strategy: a shorter-term, practical set of next steps to begin the journey of Strategy implementation. The *Path Forward* describes the “how” - the **Structure and Roles** within which Métis Governments plan to organize themselves to advance our Vision, and the “what” - the **Priorities**, our initial areas of collective action. The *Path Forward* will evolve and be updated through time, consistent with the *Data Strategy Framework*, as progress is realized and Demonstration Projects conclude, new resources are secured, and new opportunities arise.

Implementation of the Strategy will involve creating **Data Units** embedded in appropriate ways in each Métis Government that serve as internal data capacity for that Government. These Data Units will collaborate through a **Métis Nation Data Network** (“the **Network**”),



ensuring best practices are shared, common research priorities are investigated in a coordinated way, and opportunities to leverage economies of scale, particularly when it comes to the development of digital infrastructure, are realized. The Network would be coordinated by the MNC or a delegated party. It is important to note that this is the organizing structure, not an independent institution, to be adopted by OMG and MNO, but the inherent flexibility here leaves open the opportunity for other Métis Governments to join the network and share in the benefits of that collective work.



The **Priorities** are the initial areas of collective action to begin the journey of Strategy implementation, ordered in alignment with our Themes. These will guide resource allocation, shared advocacy, and practical collaboration. These include:

1. **Securing Sustainable Resourcing**

The long-term success of the Strategy depends on securing predictable and sustained funding. This priority focuses on ensuring resources are available for the work, diversifying funding streams, such as identifying new partnerships and implementing cost-recovery models, to ensure that resources are in place to support the ongoing development of Métis Data Capacity.

2. **Building Internal Data Capacity Through Data Units**

The top priority is to support Contributing Métis Governments in building foundational internal data capacity by establishing Data Units that fit the desired structure and needs.

3. **Strengthening Collaboration Among Contributing Métis Governments**



While respecting the autonomy of each Contributing Métis Government, the Strategy emphasizes the importance of coordination and knowledge-sharing via the Network. The Network will facilitate collaborative efforts in areas such as digital tools and infrastructure, data sharing, and data collection methodologies, leveraging shared resources and advancing common interests.

4. **Enhancing Secondary Data Access and Sharing**

Ensuring that Contributing Métis Governments have timely access to relevant existing data is a key priority. This work includes building partnerships with external organizations to improve access to high-quality secondary data, improving the relevance of secondary data, and advancing Demonstration Projects to develop the necessary tools to facilitate efficient and secure data sharing between and among Contributing Métis Governments and other entities.

5. **Developing Métis Census and Primary Data Collection Capacity**

A key priority is to enhance the ability of Contributing Métis Governments to independently collect primary data and, in particular, develop Métis data collection capacity and implement a Métis census. This priority includes pursuing Demonstration Projects to advance the development of data governance principles, standardized tools, and methodologies for data collection. The Métis census is a foundational tool for long-term data sovereignty and a critical complement to the variables collected through Canada's census of population.



This Strategy is a map for the Métis data journey. The *Data Strategy Framework* describes a clear destination (the Vision), guidance and wisdom to carry out this journey in accordance with Métis ways (the Principles), the tools and skills we need to develop and continuously work on to safely and successfully arrive at our destination (Themes), and an understanding of what those tools and skills look like at our destination (Outcomes). Recognizing that we have the greatest certainty over the first leg of the journey, the *Path Forward* describes how we want to organize ourselves (Structure and Roles) and areas of initial focus (Priorities) for Strategy implementation.



Key Terms & Definitions

Contributing Métis Governments

The democratically elected governments of Métis Nation British Columbia, Otipemisiwak Métis Government, Métis Nation–Saskatchewan, and Métis Nation of Ontario, who all contributed to the development of this Strategy.

Data Strategy Framework

Component of the overall Métis Nation Data Strategy, including Vision, Principles, Themes, and Outcomes.

Data Units

Dedicated staff or departments established by each Métis Government to advance its internal data capacity. Data Units are a key component of the Structure and Roles within which Contributing Métis Governments will organize themselves to advance Priorities.

Demonstration Projects

Practical opportunities to test and refine approaches that address the needs of the Métis National Council and Contributing Métis Governments and advance the Outcomes and Vision in alignment with our Principles. This includes initial Demonstration Projects from Phase 1 as well as additional Demonstration Projects in subsequent phases of work.

Métis Citizens

Individuals who are recognized by a Métis Government of the Métis Nation through a formal citizenship process.

Métis Data

All information specifically about or collected by the Métis Nation, Métis Citizens, and Métis Governments including relevant datasets that directly or indirectly pertain to or represent Métis and our interests. This includes Métis stories, traditional knowledge, lived experiences, and maps that derive from or relate to Métis Citizens, as well as statistical information about Métis.

Métis Data Capacity

The tools and skills needed to collect, manage, and use Métis Data for the benefit of the Métis Nation. Data capacity can be internal (i.e., within Métis Governments or Institutions), or systemic (i.e., among Métis Governments or Institutions).

Métis Data Sovereignty

Métis Nation exercises ultimate authority over Métis Data; a critical means towards the end goal of self-determination.

Métis Governments



The democratically elected governments of the Métis Nation British Columbia, Otipemisiwak Métis Government, Métis Nation–Saskatchewan, Manitoba Métis Federation, and Métis Nation of Ontario.

Métis Institutions

Organizations or institutions who are affiliated with the Métis Nation, but who are not governments, do not represent Citizens, but may collect and use Métis Data (e.g., Les Femmes Michif Otipemisiwak).

Métis Nation

The Métis are a distinct, rights-bearing Indigenous People in Canada, recognized under Section 35 of the *Constitution Act*, 1982. Collectively, Métis people, communities, and representative governments form the Métis Nation.

Métis Nation Data Network

A collaborative body aimed at enhancing Métis Data Capacity and governance. The Network includes Data Units within each Contributing Métis Government and fosters shared learning, strategic alignment, and data-related coordination across the Métis Nation.

Métis Nation Data Strategy

The *Data Strategy Framework* and *the Path Forward* collectively, intended to advance Métis data interests by laying out a path to Métis Data Sovereignty through the development of data capacity.

Outcomes

Descriptions of what the skills or tools described by Themes look like in practice, in the long term. Outcomes illustrate what the achievement of our Vision, and the successful implementation of the Métis Nation Data Strategy, could look like in concrete, tangible terms.

Path Forward

Component of the overall Métis Nation Data Strategy, including Structure and Roles and Priorities.

Principles

Guidance and wisdom to keep us moving in the direction of our Vision in accordance with Métis ways.

Priorities

Areas of initial focus that will guide resource allocation as we begin the journey of Métis Nation Data Strategy implementation.

Themes

Areas of investment in tools and skills that we need to safely and successfully achieve our Vision. Each Theme has an associated Outcome.

Vision

The ultimate destination that the Métis Nation Data Strategy is intended to guide us toward.



1.0: Introduction

The development of the Métis Nation Data Strategy (“the Strategy”) is a pivotal step in regaining control over our data and realizing our vision for Métis Data Sovereignty. Strategy development consisted of three interrelated and mutually reinforcing parts: the *Data Strategy Framework*, the *Path Forward* (collectively, this Strategy), and the selection and development of a set of Demonstration Projects that were used to test and refine Strategy components while also addressing immediate data needs.

The *Data Strategy Framework* articulates:

- Our Vision for Métis Data Sovereignty—the ultimate destination that the Strategy is intended to guide us toward.
- Principles that provide guidance and wisdom to keep us moving in the direction of our Vision in accordance with Métis ways.
- Themes, or areas of investment in tools and skills that we need to safely and successfully achieve our Vision.
 - Associated Outcomes describe what those tools or skills look like in practice and illustrate what the achievement of our Vision could look like in concrete, tangible terms.

The *Path Forward* is the nuts-and-bolts part of the Strategy. It describes the Structure and Roles within which Métis Governments will organize themselves as they begin Strategy implementation. It also describes a set of Priorities or practical next steps towards achieving our Vision, guided by the Principles.

Combined, the *Data Strategy Framework* and *Path Forward* describe the Métis data journey, one with a clear destination (the Vision), guidance and wisdom to carry out this journey in accordance with Métis ways (the Principles), the tools and skills we need to develop and continuously work on to safely and successfully arrive at our destination (Themes), and an understanding of what those tools and skills look like at our destination (Outcomes). Recognizing that we have the greatest certainty over the first leg of the journey, the *Path Forward* describes how we want to organize ourselves (Structure and Roles) and areas of initial collective action (Priorities) as we embark on our journey of Strategy implementation.





The rights of Indigenous Peoples to self-determination, as enshrined in the United Nations Declaration on the Rights of Indigenous Peoples (UNDRIP) (see appendix A for a complete list of acronyms), recognize the right of Métis Data Sovereignty.

Data sovereignty encompasses the rights and capacity of Métis to exercise authority over our data. This includes the authority to determine how Métis Data are treated at every stage of the data lifecycle, emphasizing Métis jurisdiction and control over all Métis Data. Métis Data encompasses all information specifically about or collected by the Métis Nation, Métis Citizens, and Métis Governments including relevant datasets that directly or indirectly pertain to or represent Métis and our interests. This includes Métis stories, traditional knowledge, lived experiences, and maps that derive from or relate to Métis Citizens, as well as statistical information about Métis.

Self-determination is a broader concept that emphasizes the rights of individuals and communities to freely determine their political status and to pursue economic, social, and cultural development. As Métis, we assert our data sovereignty as a means for achieving and exercising self-determination.

In summary, data sovereignty is a foundational right of the Métis Nation to exercise ultimate authority over our data resources, while self-determination describes the process through which we decide upon our own futures through political and economic governance as informed by Métis Data.



1.1 : Who are the Métis Nation?

The Métis are a distinct and rights-bearing Indigenous People in Canada, recognized under Section 35 of the *Constitution Act*, 1982. Our rights, rooted in a unique culture, history, and governance system, are affirmed by Canadian law. Emerging in the late 18th century during the fur trade in the historic Northwest, the Métis Nation developed through the intermarriage of First Nations women and European fur traders. This gave rise to distinct Métis communities across what is now known as the Métis Homeland, encompassing Alberta, Saskatchewan, Manitoba, and parts of British Columbia, the Northwest Territories, Ontario, and the northern United States.



Métis are represented regionally by the Métis Nation British Columbia (MNBC), Otipemisiwak Métis Government (OMG), Métis Nation–Saskatchewan (MN-S), Manitoba Métis Federation (MMF), Métis Nation of Ontario (MNO), Métis Settlements General Council (MSGC), and Northwest Territories Métis Nation (NWTMN). The Métis National Council (MNC) advocates for the Métis Nation at the national and international levels and derives its mandate from its Governing Members.



1.2 : What is the Métis Nation Data Strategy?

The Strategy, developed collaboratively by Contributing Métis Governments (MNBC, OMG, MN-S, and MNO) and the MNC, lays out a path to Métis Data Sovereignty through the development of data capacity. The Strategy answers the question: “When it comes to our data journey, where are we headed and how should we get there?”. Importantly, the Strategy is not a top-down policy document, but is a bottom-up enabling structure; it is grounded in the capacity needs and distinct approaches of Métis Governments while building collective priorities and a structure for collaboration to realize shared benefits. Additionally, the Strategy is a call for continued investments in the infrastructure and resources needed to realize Métis Data Sovereignty at multiple scales.



1.3 : Why is the Métis Nation Data Strategy Important?

This is the first substantive national investment and initiative focused on advancing Métis Data Sovereignty. Presently, Métis Data are fragmented, limited, and often misrepresented, which continues to hinder the ability of Métis Governments to make data-informed decisions. The lack of historical investment in Métis Data has left a need for basic data capacity. This means that Métis data work needs accelerated investments to approach some form of equity in data infrastructure, and this Strategy provides the necessary foundation for coordination, collaboration, decision-making, and growth for Métis Governments in the data space. This Strategy provides an opportunity to leapfrog by learning from the advances made by others and can serve as a central reference point for coordinating collective efforts to build data capacity, while respecting the autonomy of individual Métis Governments.





1.4 : Who is this Strategy for?

The Strategy is first and foremost a guide for Métis Governments, Métis Institutions, and the MNC in the work of realizing data sovereignty in alignment with our values and priorities. The Strategy is intended to serve the Métis Nation, including all Métis Governments, to the greatest extent possible.

At the same time, the Strategy serves as a call to action for federal and provincial partners, external stakeholders, and any organizations that collect, hold, or use Métis Data. These entities have a responsibility to ensure that they interact with Métis Data in a way that advances our data sovereignty and supports our self-determination. For those seeking to partner with the Métis Nation on data-related initiatives, this Strategy clearly articulates our data interests and outlines the need for collaboration and investment in developing data capacity.



1.5 : How was the Strategy Developed?

The Strategy was developed under Phase 1 of the *Transformational Approach to Indigenous Data* (TAID) initiative. Phase 1 work consisted of Strategy development and the selection and development of a set of Demonstration Projects that were used to test and refine Strategy components while also addressing immediate data needs.

The development of the Strategy was led by the Métis Nation Data Strategy Working Group (“the Working Group”), which consists of Technical and Senior Official representatives from Contributing Métis Governments. The Working Group was established in May 2023, following the initiation of Strategy development by the MNC in March 2023. The Working Group was tasked with guiding the strategic direction of the project and serving as a forum for collaboration on data-related work including the scoping and development of Demonstration Projects.

In developing the Strategy, Contributing Métis Governments were engaged to gain an understanding of current data practices, identify key gaps in capacity and infrastructure, explore opportunities for strategic partnerships with external organizations, and on



Demonstration Projects. This work was approached collaboratively, drawing on information from within the Métis Nation, as well as looking outwards, drawing on lessons and best practices from a wide range of stakeholders and experts to shape the Strategy. The culmination of this engagement informed the creation of the *Data Strategy Framework*. Over the subsequent months, the Framework went through three iterations. In Spring 2024, the Working Group circulated the *Data Strategy Framework* to Contributing Métis Governments for review, seeking their input and recommendations.

The *Path Forward* was guided by initial drafts for the *Data Strategy Framework* and formed part of input to Indigenous Services Canada (ISC) for their Phase 2 TAID submission in order to secure the necessary funding for Strategy implementation.

Given the evolving nature of the data space, and to be Métis-centered while building momentum and knowledge, Demonstration Projects were selected on a rolling basis to enable learning through action, to ground the Strategy in real-world applications, and to help refine the *Data Strategy Framework* and *Path Forward*. These projects were chosen to explore key interests and concepts relevant to the Strategy, foster collaborative pathways, build shared language, and develop capacity—each contributing valuable insights to the Strategy while holding independent legacy value.


In addition, the projects were intended to demonstrate:

- Opportunities to leverage collective interests in specific data products to address the needs of Métis Governments, benefiting from economies of scale.
- How investments in Métis Data Capacity can lead to practical solutions for longstanding challenges in data access, governance, and use.
- The value of innovative data solutions for Métis entities and government partners, highlighting how such initiatives can improve on existing solutions and how Métis Governments are able to develop practical solutions, unencumbered by the weight of bureaucracy.
- The potential to develop long-term data infrastructure that supports Métis Data Capacity and fosters collaboration across different regions and policy areas.

The first Demonstration Project, the Métis Data Dashboard, was identified and launched early in the Strategy development process to address a need highlighted by Contributing Métis Governments and the MNC. Technical Committees, Senior Officials, and MNC staff were then invited to propose ideas for additional Demonstration Projects or to identify immediate needs that could be tackled through these initiatives.



Demonstration Project proposals were assessed against selection criteria focused on strategic value, ability to meet immediate needs, feasibility, and potential for partnership with external organizations. Selected projects were then scoped in collaboration with relevant Technical Committees and the Working Group to align with the available timeline and budget, with a plan and action steps created to complete each project by March 2025.

 The final drafting of the Strategy commenced in the fall of 2024. By November 2024, the draft Strategy was sent out for final review, with formal approvals obtained in October 2025.

2.0: Data Strategy Framework

The *Data Strategy Framework* is the foundation of the Strategy, outlining a Vision alongside Principles, Themes, and Outcomes that collectively express what Contributing Métis Governments seek to achieve as it relates to our data interests. The Framework provides guidance on how we will work together and identifies key areas where further investment in data capacity is required. The components of the Framework are designed to function as an integrated whole, laying out a path to Métis Data Sovereignty through the development of data capacity.

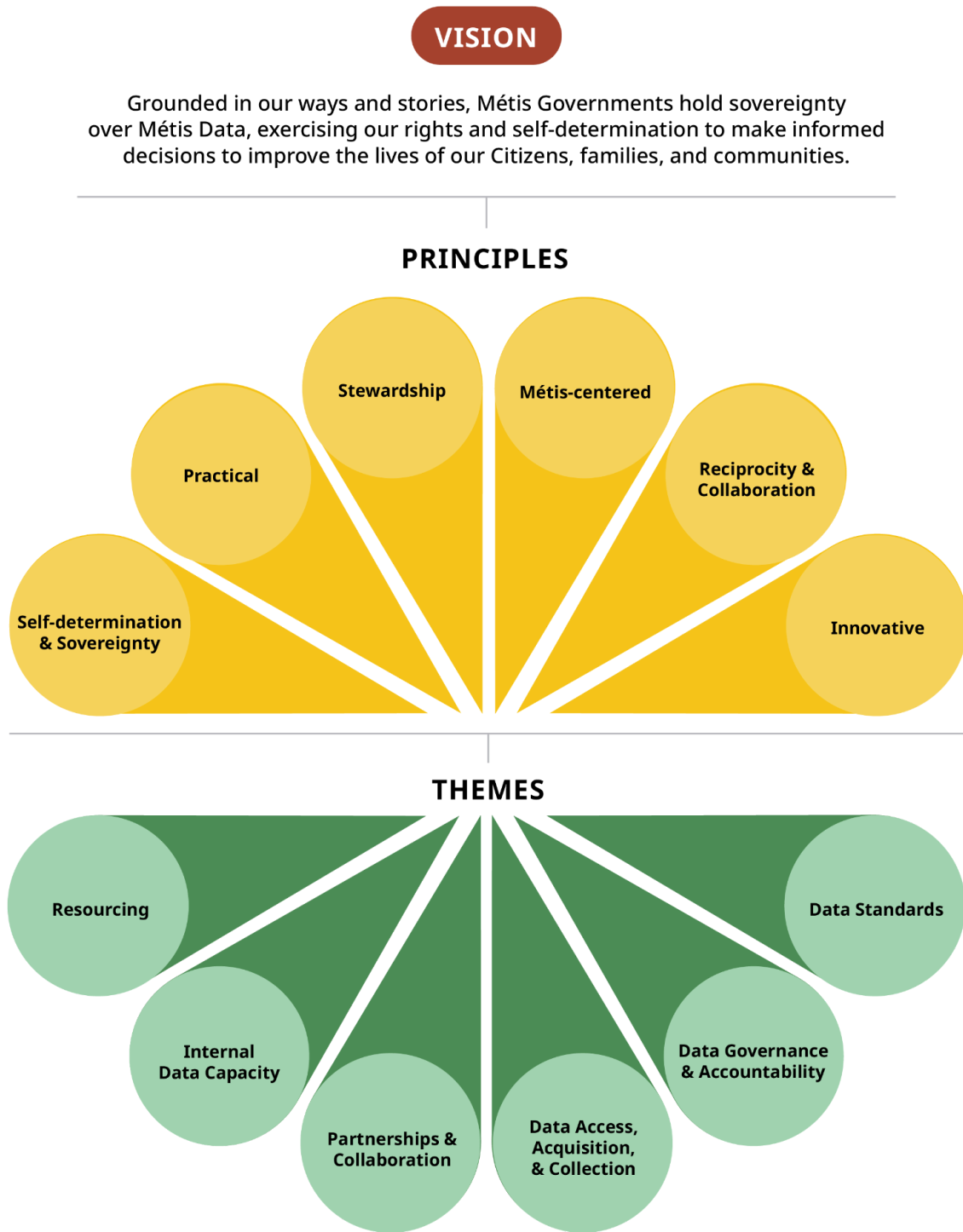
The *Data Strategy Framework* articulates:

- Our Vision for Métis Data Sovereignty—the ultimate destination that the Strategy is intended to guide us toward.
- Principles that provide guidance and wisdom to keep us moving in the direction of our Vision in accordance with Métis ways.
- Themes, or areas of investment in tools and skills that we need to safely and successfully achieve our Vision.
 - Associated Outcomes describe what those tools or skills look like in practice and illustrate what the achievement of our Vision could look like in concrete, tangible terms.

Figure 2.1 illustrates the Vision, Principles, and Themes of the *Data Strategy Framework*.



Figure 2.1: Data Strategy Framework



2.1 : Vision

Our Vision is the ultimate destination that the Strategy is intended to guide us toward. Our Vision reflects the goals of developing the data capacity required to achieve Métis Data Sovereignty, as a means of advancing Métis self-determination.

“Grounded in our ways and stories, Métis Governments hold sovereignty over Métis Data, exercising our rights and self-determination to make informed decisions to improve the lives of our Citizens, families, and communities.”



2.2 : Principles

A set of Principles provides guidance and wisdom to keep us moving in the direction of our Vision in accordance with Métis ways:

1. **Self-determination and Sovereignty:** Individually and collectively, center the rights to self-determination and data sovereignty in decision-making, respecting Métis Citizens' data rights and other Métis Governments' sovereignty.
2. **Practical:** Focus on solving current challenges through scalable and adaptable solutions, tools, and infrastructure, addressing immediate needs while contributing to the long-term Vision.
3. **Stewardship:** Respect, honour, and build the trust of Métis Citizens by treating data as sacred, never lying, obfuscating, or misleading.
4. **Métis Centered:** Make sure we can still see our world reflected when we use Western data tools.
5. **Reciprocity and Collaboration:** Leverage opportunities to work together, build on what others have done, and share what we have done.
6. **Innovative:** Be scrappy and inventive, developing new tools if existing ones cannot reflect our reality or meet our needs, and creatively leveraging everything at our disposal.





2.3 : Themes and Outcomes

The Strategy includes six Themes that represent the main areas of investment in tools and skills that we need to safely and successfully achieve our Vision. Each Theme has an associated Outcome describing what those tools or skills look like in the long term, illustrating what the achievement of our Vision could look like in concrete, tangible terms.

Themes are presented in order according to the needs and priorities of Contributing Métis Governments and the sequence of investments required to achieve our Outcomes and, ultimately, our Vision. To begin, Métis Governments must have access to the necessary financial resources to build internal data capacity. Once this capacity is established, access to relevant and consistent data is necessary for Métis Governments to make use of. Following access to necessary data, policies and procedures must be in place to manage the collection, use, and stewardship of the data. As these foundational policies and procedures take shape, specific mechanisms such as the standards to ensure data are organized in a consistent manner will become more important. Finally, partnerships and collaborations can be established to provide additional capacity and support the advancement of all Themes to their Outcome state. Table 2.2 summarizes the Themes and associated Outcomes.

Table 2.2: Themes and Outcomes

Theme	Outcome
Resourcing	The necessary financial resources are available to achieve our Vision.
Internal Data Capacity	Métis Governments and Institutions have the tools and skills to collect, manage, and use Métis Data for the benefit of Citizens and engage with external partners to develop systemic data capacity.
Partnerships and Collaboration	Capacity and resources are leveraged both internally, through collaboration, and externally by forming partnerships with external organizations.
Data Access, Acquisition, and Collection	Métis Governments know what data are necessary in a given circumstance and there are clear paths to effectively obtain, organize, use, and store those data, whether from



	primary or secondary sources.
Data Governance and Accountability	Policies and procedures exist and are implemented to govern Métis data collection, use, and stewardship in a manner aligned with Métis values and that builds trust with and respects Métis Citizens.
Data Standards	Data are organized consistently and in a way that benefits Métis Citizens, e.g. data standards effectively navigate the tensions and trade-offs inherent between regional and cultural specificity and the benefit of a collective voice.

THEME:

Resourcing

OUTCOME:

The necessary financial resources are available to achieve our Vision.

Implementing the Resourcing Theme of this Strategy will require:

- Long-term, predictable resourcing to hire staff and develop capacity to develop and maintain data infrastructure, systems, and procedures.
- As much funding as possible to support the implementation of the Strategy given the available opportunities.
- Processes and commitments to ensure resourcing continuity.

We will know that we have been successful in implementing the Resourcing Theme when the Métis Nation has:

- Secure and dedicated long-term funding to support data capacity, including being able to effectively hire, train, and retain staff.
- Appropriate funding mechanisms (i.e., service provision, cost-recovery, endowment fund) to support long-term data sustainability.
- Partners at the regional, national, and international level who have resources to support Métis Data initiatives.



THEME:

Internal Data Capacity

OUTCOME:

Métis Governments and Institutions have the tools and skills to collect, manage, and use Métis Data for the benefit of Citizens and engage with external partners to develop systemic data capacity.

Implementing the Internal Data Capacity Theme of this Strategy will require:

Infrastructure:

- Tool(s) or framework(s) for custom data reporting and visualization to help Métis Governments to store, protect, analyze, and communicate all types of Métis Data.
- Modern data infrastructure including data management systems and appropriate data security and data storage solutions (e.g., servers).

People, Skills, Tools:

- Knowledge and capacity to understand data needs, which data are available, and how to properly access, use, and share data across policy areas.
- Resources available to staff to help them enhance their skills and capabilities, enabling them to effectively use data in their work.
- Sufficient people, processes, and methods (internally) in place to use data to inform governance, improve the wellbeing of Citizens, and advocate for Métis rights.
- Sufficient people, processes, and resources in place to facilitate cooperation with external parties to build systemic data capacity.

We will know that we have been successful in implementing the Internal Data Capacity Theme when the Métis Nation has:

- Resources to support all Métis Data users.
- Knowledge and capacity to understand and keep up with data-related technological advances, ensuring Métis Governments and Métis Institutions remain at the forefront of leveraging data to benefit Métis Citizens.
- Secure and scalable data infrastructure tailored to the needs of Métis Governments.
- Partners with the capacity to support Métis-driven data requests and development, contributing to enhancing Métis voices in the data landscape and the decolonization of existing data systems.



THEME:

Partnerships and Collaboration

OUTCOME:

Capacity and resources are leveraged both internally, through collaboration, and externally by forming partnerships with external organizations.

Implementing the Partnerships and Collaboration Theme of this Strategy will require:

Influence:

- An expanded collective presence at the regional, national, and international level to bring visibility to the need to advance Métis Data Sovereignty.
- More effective use of data in championing the rights, needs, and aspirations of the collective Métis Nation.
- New initiatives and projects driven by insights from data to support the overall development of the Métis Nation.
- More effective use of data to capture, preserve, and promote the rich history, stories, and culture of the Métis Nation.
- The ability to influence federal and provincial governments to ensure they engage more transparently and responsively with the Métis Nation and each Métis Government.
- Federal and provincial governments that understand what Métis Data are to ensure they are active partners in advancing Métis Data Sovereignty.
- Leadership in developing Métis indicators that effectively measure the impact and value of government interventions (federal, provincial, or Métis) for Métis Citizens, Métis Governments, and Métis Institutions.

Partnerships:

- Consolidated and expanded partnerships with other Indigenous organizations, government agencies, academic institutions, and the private sector to advance Métis Data Sovereignty and where appropriate collective interests among Indigenous Peoples.
- Investments in the relationship with Statistics Canada and other federal and provincial statistical organizations to improve processes including engagement, consultation, and cooperation on data-related work, requesting data, and identifying partnership opportunities.



- Coordination between Métis Governments and Métis Institutions to center our interests in any external research about or with Métis.
- Enhanced cooperation at the regional, national, and international level to develop the data capacity required to achieve Métis Data Sovereignty.

Collaboration:

- Collaboration and opportunities to learn from other Indigenous governments, particularly on data policies and procedures.
- Collaboration and sharing of resources, data, policies, best practices, and learnings across Métis Governments and different service and policy areas to benefit from economies of scale and shared learning, while still centering Métis Governments’ roles in governance, data sovereignty, and accountability to Métis Citizens and Institutions.

We will know that we have been successful in implementing the Partnerships and Collaboration Theme when the Métis Nation has:

- Full representation and participation on regional, national, and international platforms, such as forums, committees, organizations, conferences or decision-making bodies, to advance Métis Data Sovereignty.
- Policies and procedures that advance Métis data interests with external partners.
- Strategic decision-making authority to decide what metrics are important to each Métis Government and capacity to make use of and integrate these metrics into its relationships with other orders of government and partners.
- Ongoing and active use of data to advocate for regional and collective Métis Nation priorities, to inform decision-making and allow us to tell our own stories, and govern effectively.
- Established partnerships with Indigenous organizations, governments, academia, and private sector organizations to share data, resources, expertise, policies, agreements, and best practices as related to advancing Métis Data Sovereignty.
- Required research capacity and cooperation to advance objectives as desired by Métis Governments.
- Active collaboration among Métis Governments to advance the interests of Métis Citizens.
- Partners who understand what Métis Data is and respect the importance of Métis Data Sovereignty.



THEME:

Data Access, Acquisition, and Collection

OUTCOME:

Métis Governments know what data are necessary in a given circumstance and there are clear paths to effectively obtain, organize, use, and store those data, whether from primary or secondary sources.

Implementing the Data Access, Acquisition, and Collection Theme of this Strategy will require:

- A clearer understanding of our data needs and what data gaps impede better informed governance and decision-making.
- Capacity to acquire data to advance data needs, including:
 - Efficiently accessing existing data from external government agencies, partners, and other sources and consistent procedures to acquire data through reciprocal partnerships.
 - For direct (primary) data collection to support regional objectives and collective priorities.
- Standards to support primary data collection methods including data quality standards for analysis tailored to the needs of Métis Governments and the Métis Nation as a whole.

We will know that we have been successful in implementing the Data Access, Acquisition, and Collection Theme when the Métis Nation has:

- Access to relevant and appropriate data to meet the governance needs of Métis Governments and, where appropriate, Métis Institutions.
- Capability to collect new data and make use of existing data through partnerships and initiatives in a way that protects Métis Citizens and our data, and supports policy area-specific needs and priorities.
- Consistent, rigorous processes to acquire primary data, including establishing our own methods and approaches adapted to the Métis context.
- Standardized tools and platforms for data collection, data rematriation, data analysis, and reporting.
- Capacity to identify data needs and effectively leverage or modify existing (secondary) or launch new (primary) data collection processes to advance e data needs.



THEME:

Data Governance and Accountability

OUTCOME:

Policies and procedures exist and are implemented to govern Métis data collection, use, and stewardship in a manner aligned with Métis values and that builds trust with and respects Métis Citizens.

Implementing the Data Governance and Accountability Theme of this Strategy will require:

- Métis-specific data governance policies and frameworks that recognize Métis Governments as decision-making entities and protect Métis Citizens, Governments, and Institutions' data and rights.
- Broader recognition of the inherent authority of each Métis Government to govern Citizen data based on citizenship registries, policies, and nation-to-nation relationships.
- Integration of data governance rights and protocols into Métis Governments' legislation and agreements, to communicate expectations and hold others accountable to Métis data practices.
- Guidance, accountability mechanisms, protections against misuse and misrepresentation, and sufficient capacity to ensure compliance with governance practices across all sectors, for all users of Métis Data.
- Augmented practices, policies, and processes to increase trust and accountability to Citizens in the use and protection of Métis Data, including through data-related policies and communication channels.

We will know that we have been successful in implementing the Data Governance and Accountability Theme when the Métis Nation has:

- Complete sovereignty over Métis Data.
- Métis-specific data governance frameworks and supporting policies and principles that protect Métis Data and respect each Métis Government's nation-to-nation relationship with Canada and relationships with other governments.
- Clear directives exist regarding data privacy and security considerations that reinforces each Métis Government's accountability to Métis Citizens, and where appropriate, Métis Institutions.
- A presence recognized by other actors, ensuring respect for Métis Governments' data sovereignty and preventing the misuse of Métis Citizens' data.
- Data-sharing agreements to access and share existing Métis Data.



- Solidified collaboration among Métis Governments to advance the interests of the Métis Nation with transparency and reciprocity.
 - Citizens who are empowered to engage with Métis Governments, request relevant data, and provide meaningful input to enhance policies and programs.
 - Métis Governments with the capacity to respond to requests and engage meaningfully with Citizens.
 - Transparent and accessible communications to ensure Citizens have a clear understanding of how data are used by Métis Government and Métis Institutions, and where applicable, other entities or partners.
-

THEME:

Data Standards

OUTCOME:

Data are organized consistently and in a way that benefits Métis Citizens, e.g. data standards effectively navigate the tensions and trade-offs inherent between regional and cultural specificity and the benefit of a collective voice.

Implementing the Data Standards Theme of this Strategy will require:

- Policies for consistent, accurate, and Métis-specific data collection that can be regionally tailored by Métis Governments and applied to or used by Métis Institutions and external partners.
- Guidelines for consistent data formats, approaches to metadata, data-related terminology, and interoperability across all types of Métis Data, where appropriate and feasible.
- Procedures for ongoing review and updating of data collection and management standards that can be adjusted to support each Métis Government's needs and priorities, where applicable.
- Where appropriate and desired, standardization of methods for collecting primary data.
- Clear, standardized data retention policies to establish appropriate timelines and procedures for storing and disposing of Métis Citizen data.
- Policies outlining the repercussions of improper data access and usage.



We will know that we have been successful in implementing the Data Standards Theme when the Métis Nation has:

- Established standards and protocols for the collection, access, organization, storage, use, and stewardship of Métis Data in areas that best support collective priorities and regional needs.
- Ongoing processes for continually improving standards.
- Methods that bring consistency to data collection, where desired, in order to collect high-quality primary data.
- Consistent retention policies guiding storage, preservation, and disposal of data across Métis Governments, and guidance for Métis Institutions, other orders of government, and partners.
- Accountability standards, including formal procedures and oversight mechanisms for responsible data usage, that outline the repercussions of data misuse to protect the rights and privacy of Métis Citizens, Métis Governments, and Métis Institutions.



3.0 : Path Forward

The *Path Forward* is the nuts-and-bolts part of the Strategy: a practical set of next steps, guided by the *Data Strategy Framework*, that can be taken as we begin the journey of Strategy implementation. It describes the Structure and Roles with which Métis Governments plan to organize themselves to advance our Vision. It also describes the “what” – a set of Priorities or initial collective action areas to guide resource allocation, shared advocacy, and practical collaboration. As it is more specific, tactical, and short-term, the *Path Forward* will be renewed on an as-needed basis, for example as Priorities are realized, lessons are learned, or needs change.

3.1 : Structure and Roles

Métis Governments will establish Data Units to build internal data capacity and strengthen collaboration through the development of a Métis Nation Data Network (“the Network”). Each Data Unit will focus on advancing its Métis Government’s data priorities while contributing to



shared goals and knowledge exchange via regular meetings and subcommittees within the Network. This provisional structure will be tested and refined to meet both individual government needs and collective goals. It aims to provide Métis Governments with the autonomy to address regional priorities while enabling collaboration to achieve economies of scale and accelerate application of knowledge and innovation.

3.1.1 : Métis Government Data Units

Data Units will be established within Métis Governments to build internal data capacity. As Data Units are established they will be tasked with identifying opportunities to enhance internal data capacity and developing plans for acting on those opportunities. This process of continual growth and improvement will be essential to identifying and prioritizing actions to develop internal data capacity within Métis Governments and systemic data capacity through the Network in the long term. In addition to building internal data capacity within each Métis Government, Data Units will be responsible for directing and contributing to the activities of the Network. There is no prescriptive structure to Data Units themselves, though they are likely to take the form of either standalone data departments or data specialists distributed across departments.

Key activities and outcomes of the Data Units include:

- Bringing consistency to program evaluation. Data Units will support Métis Governments to integrate data in the evaluation of and planning for programs and services, which is currently insufficiently funded in ad hoc ways via program or policy area specific arrangements. Consistency across policy areas will support Métis Governments to make informed assessments of the effectiveness of their investments.
- Coordinating internal data-related priorities and activities, including infrastructure development or procurement, indicator development, and data collection processes. This will enable Métis Governments to develop a deeper understanding of priorities and needs, including identifying areas where collaboration is critical.
- Working with provincial partners to access and use data about Métis Citizens held by other governments and undertaking partnerships that enable data linkages. This will enable increased access to data relevant to each Métis Government, and a deeper understanding of what data need to be collected through other means.
- Engaging regional research institutions, academics, and other bodies working in the region to ensure alignment with Métis research priorities and practices across the



research sector. This will support more research underway to be aligned with Métis interests.

- Developing data governance and research protocols that reinforce Métis Governments' role in realizing Métis Data Sovereignty. This will bring more clarity to internal activities and external partners who are looking to use, collect, or engage with Métis Data.

By creating Data Units within Métis Governments, we aim to enhance Métis Governments' ability to collect, manage, and use Métis Data for the benefit of Citizens and to participate in the development of systemic data capacity, including through the Network.



3.1.2 : Métis Nation Data Network

The Network will be established to coordinate and build data capacity across the Métis Nation. It will bring together representatives from Métis Governments' Data Units, coordinated by the MNC or a delegated party, to share knowledge, leverage resources, and unite data-related efforts.

A key role of the Network will be to support communication and reporting between Métis Governments through the Data Units, making sure decision-makers remain informed and that data initiatives are aligned with the broader objectives of the Métis Nation, where appropriate. The Network will facilitate the exchange of best practices, the development of common standards and methodologies, and the coordination of data activities. This will allow Métis Governments to pool resources and expertise, enabling collaboration on shared research and data priorities, taking advantage of economies of scale across the Nation, and creating the conditions for timely scale-up and spread of knowledge and innovation.

When it is beneficial to have a collective voice, the Network will act as the main point of contact for the federal government, national research institutions, and other partners. By managing these relationships, the Network will ensure that all collaborations and data governance practices align with our Vision and adhere to our Principles.

Key activities and outcomes of the Network include:

- Facilitating collaboration on shared research and data priorities among Métis Governments to identify and address common research and data needs. This



coordinated approach ensures that shared data challenges are addressed collectively, fostering consistency in data governance and advancing mutual interests.

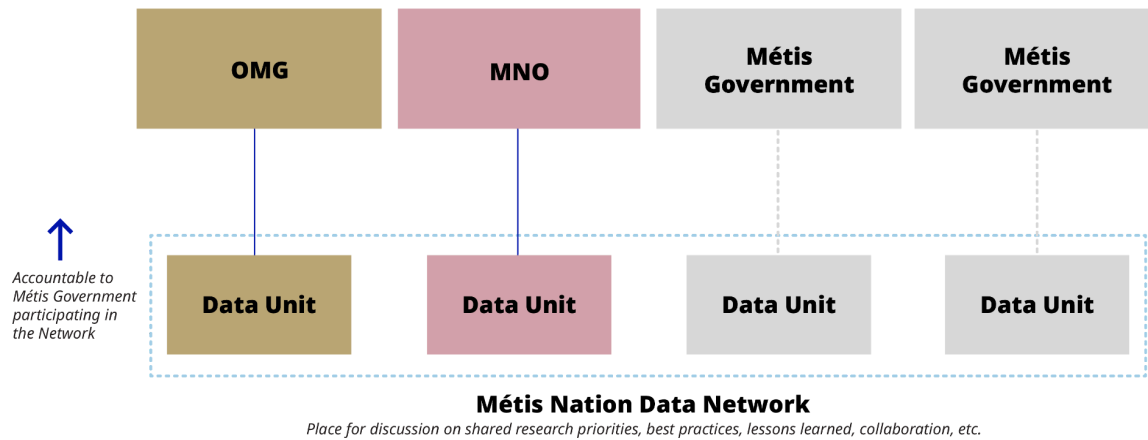
- Developing common standards and methodologies where appropriate, ensuring consistency and reliability in data handling and analysis. Standardized practices across regions improve the accuracy and comparability of data, enhancing its reliability to be used in decision-making processes.
- Sharing best practices and lessons learned to promote the exchange of successful initiatives and experiences, aligning activities to maximize efficiency and effectiveness. This ensures we learn from one another, avoid duplication of efforts, and achieve improved outcomes more efficiently.
- Coordinating activities, including determining which initiatives are best managed by a coordinating body and which should be led by individual Métis Governments. This ensures effective resource allocation, transparency, and alignment with both national and regional priorities.
- Establishing the pathways and forums that enable the sharing of innovative practices, successes, and lessons learned – these are the core conditions for the timely uptake and application of knowledge to practice.
- Leveraging economies of scale by pooling resources and capabilities of Métis Governments through the Network to achieve efficiencies and cost savings in data-related activities. By working together, we can reduce costs and share resources, ultimately enhancing the efficiency and reach of data-related projects.

The Network will create a space for shared learning, strategic alignment, and collaboration among Métis Governments. By connecting data efforts across regions, it will support the long-term Vision of the Strategy, ensuring that we are well-positioned to govern through data expertise, make informed decisions, and develop the data capacity necessary to serve Métis Citizens effectively.

Figure 3.1 presents the relationships and entities that make up the Network.



Figure 3.1: The Métis Nation Data Network



3.1.3 : Launching Data Units and the Network

As we move forward with the implementation of the Strategy, we aim to ensure that clear governance, roles, and responsibilities for the Data Units and Network are established, preparing us for effective coordination and alignment across the Métis Nation.

Each Data Unit will be directly accountable to its respective Métis Government, ensuring that the priorities, needs, and regional contexts of each Métis Government are addressed. By integrating the Data Units within existing governance and operational structures, Métis Governments will be able to ensure that data activities align with their specific mandates and priorities.

At the national level, the Network will include representatives from Métis Governments and the MNC, with the MNC or a delegated party serving as the secretariat. A Terms of Reference will be developed to clearly define roles and responsibilities, decision-making processes, and the frequency of meetings. This document will outline the Network's operations and scope, providing a framework for effective coordination between the Métis Governments and the MNC.

As the Network matures, the Terms of Reference may also specify the authority to establish subcommittees to focus on key areas such as technical standards, data governance, and community engagement. These subcommittees will allow for more focused work on specific priorities, enabling the Network to address both shared challenges and emerging opportunities effectively.



The scope of activities for both the Data Units and the Network will be contingent on the level of federal funding secured, shaping the extent of their work during this provisional stage. These activities will align with the priorities identified by Métis Governments, ensuring that both regional and national needs are addressed as we move forward with the Strategy.

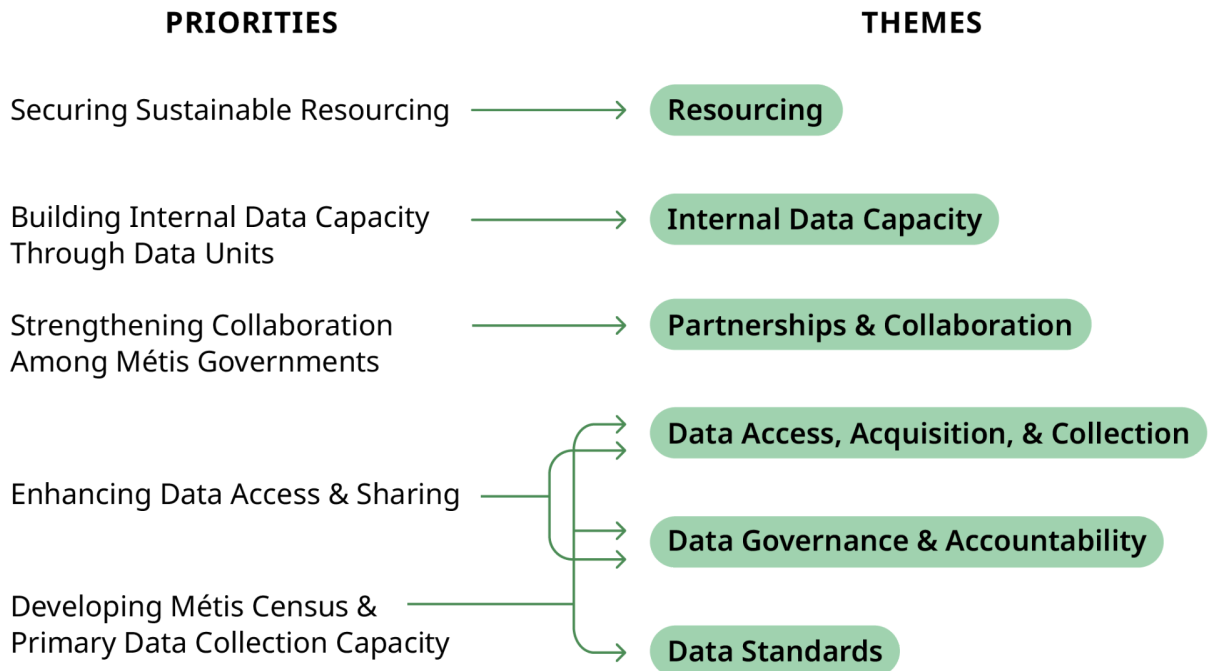
3.2 : Priorities

Priorities are initial areas for collective action that will guide resource allocation, shared advocacy, and practical collaboration. Priorities were identified based on input from Contributing Métis Governments, with the goal of addressing both the shared and regionally-specific needs of Métis Governments to advance the Strategy.

Priorities are numbered to indicate the order in which resources and capacity for advocacy and collaboration will be allocated in alignment with our Themes. The first and second Priorities are to secure sustainable resourcing and use the financial resources to build internal data capacity within Métis Governments by establishing Data Units. It will then be possible to pursue subsequent Priorities: including strengthening collaboration among Métis Governments through the Network, enhancing data access and sharing, and developing Métis census and primary data collection capacity. Figure 3.2 summarizes the connection between Priorities and Themes.



Figure 3.2: Connections between Priorities and Themes



1. Securing Sustainable Resourcing

The long-term success of the Strategy depends on securing predictable and sustained funding. This priority focuses on diversifying funding streams, such as partnerships and cost-recovery models, to ensure that resources are in place to support the ongoing development of Métis Data Capacity. As an example, given that external partners are finally recognizing the mandate of Métis Governments to tell the stories of Métis Citizens through data, the data-related work previously undertaken by those external partners should progressively be delivered by Métis Governments. The funding associated with that work should flow to Métis Governments. Securing sustainable resourcing is a direct reflection of the desired Outcome for the Resourcing Theme.

2. Building Internal Data Capacity Through Data Units

The development of Métis Data Capacity is a long-term goal, but there are foundational elements of Contributing Métis Governments' internal data capacity that must be prioritized because they lay the groundwork for Strategy implementation in other areas. The first priority is to build internal data capacity within Contributing Métis Governments to use data to inform programs and policies and to coordinate internally and externally to further build data



capacity, through the establishment of Data Units. Establishing Data Units will play a key role in advancing the Theme, and associated Outcome of Internal Data Capacity.

3. Strengthening Collaboration Among Métis Governments

The third priority is to build coordinated data capacity by establishing the Network to strengthen collaboration among Métis Governments. While respecting the autonomy of individual Contributing Métis Governments, this priority emphasizes the importance of coordination and knowledge-sharing across Métis Governments. Collaborative efforts in areas such as digital tools, data sharing, and collection methodologies will allow us to leverage shared resources, learn from one another, and advance collective interests more effectively. Collaboration via the Network will be critical in areas where collective action is most beneficial, such as influencing national data standards and securing data from external sources like Statistics Canada. Strengthening collaboration among Métis Governments will be foundational to advancing the Theme, and associated Outcome of Partnerships and Collaboration.

4. Enhancing Data Access and Sharing

Ensuring that Contributing Métis Governments have timely access to relevant data is a key priority. This includes building partnerships with external organizations to improve access to externally-held Métis Data and developing the necessary tools, through Demonstration Projects, to facilitate efficient and secure data sharing between Contributing Métis Governments and other entities. Access to these high-quality secondary data will be crucial for decision-making, policy development, and advocacy efforts while Contributing Métis Governments develop the capacity to collect, manage, and use primary data. Enhancing data access and sharing will help to advance the Themes, and associated Outcomes of Data Access, Acquisition, and Collection and Data Governance and Accountability.

5. Developing Métis Census and Primary Data Collection Capacity

A key priority is to enhance the ability of Contributing Métis Governments to independently collect primary data, and in particular, develop Métis data collection capacity and implement a Métis census. This will enable each Métis Government to gather data that accurately reflects the unique demographics, needs, and experiences of Métis Citizens within each respective region. By building the capacity to design, implement, and analyze a Métis census, we ensure that our data reflects our own measures of success and priorities, rather than relying on external data sources.



This priority will be advanced through Demonstration Projects and includes the development of standardized tools and methodologies for data collection, ensuring data quality and consistency across Métis Governments, while allowing for regional tailoring to meet specific needs. Strengthening primary data collection will not only fill critical data gaps but will also support Métis Governments in making evidence-based decisions, improving service delivery, and advocating more effectively for Métis Citizens. The Métis census will serve as a catalyst for the development of Métis Data Capacity. Developing a Métis census and primary data collection capacity will help to advance the Themes, and associated Outcomes of Data Access, Acquisition, and Collection, Data Governance and Accountability, and Data Standards.

Demonstration Projects have served as practical opportunities to test and refine Strategy components while also addressing the immediate data needs of Contributing Métis Governments. As we move forward with the implementation of the Strategy, these projects will continue to be important in refining the *Path Forward*. They will provide insights into best practices for data collection, management, use, and governance, and will help identify solutions that can be scaled across the Métis Nation.

The Demonstration Projects completed as part of the development of the Strategy in Phase 1 include:

- **Métis Data Dashboard:** A practical tool designed to improve access to census data for Métis Governments. It allows users to explore, analyze, and visualize census data to support decision-making, service delivery, and data sharing among Métis Governments.
- **Métis Data Governance Toolkit:** A guide designed to support Métis Governments in establishing and implementing data governance frameworks. It includes information on the core elements of data governance, supplemented with scenario-based examples, templates, and additional resources.
- **Métis Primary Data Dashboard:** A web platform designed to host data collected through a Métis Government-run census. It allows users to explore these data through an accessible, user-friendly interface.
- **Population Projections:** Custom demographic projections and accompanying Métis Government-specific visualization tool that consider the unique drivers of Métis populations.

Refer to Appendix B for more information of each Demonstration Project including the objectives, key features, strategic value, impact and benefits, and challenges and future steps.





4.0 : Conclusion & Call to Action

The Strategy holds transformative potential for building the data capacity required to achieve Métis Data Sovereignty and support the self-determination of the Métis Nation. Acting as a guide for future actions and a call to action for targeted investments and collaborative efforts in data capacity, the Strategy aims to support effective governance, and enhance the well-being of Métis Citizens and communities.

Investments made to date have already begun to bear fruit, demonstrating substantial progress in building data capacity that enhances the ability of Contributing Métis Governments to make data-driven decisions. These initial successes highlight the importance of maintaining and increasing the momentum of these efforts. Continued investment and support are crucial to fully realizing our Vision under the Strategy. We are seeking an additional \$15.03 million over five years under the TAID Phase 2 initiative. This funding will support the implementation of the Strategy, including building internal data capacity within Métis Governments and strengthening collaboration through the Network.

Investing in Métis Data Sovereignty is not only a strategic priority but also a vital component of reconciliation and renewing the nation-to-nation relationship. By empowering the Métis Nation with the tools and resources needed to control and utilize our data, we are affirming our right to self-governance and ensuring that our voices are heard in decision-making processes. This commitment to data sovereignty aligns with the broader goals of reconciliation, promoting equity, justice, and mutual respect between the Métis Nation and the Government of Canada.

In conclusion, the Strategy is a transformative initiative that promises to significantly enhance the data capacity and ultimately the self-determination of the Métis Nation. Continued investment and support are essential to sustain the momentum and achieve the long-term vision of data sovereignty, ultimately contributing to a stronger, more resilient Métis Nation and a renewed and mutually beneficial nation-to-nation relationship.



Appendices

A : Acronyms List

ISC: Indigenous Services Canada

MMF: Manitoba Métis Federation

MNBC: Métis Nation British Columbia

MNC: Métis National Council

MNO: Métis Nation of Ontario

MN-S: Métis Nation-Saskatchewan

MSGC: Métis Settlements General Council

NWTMN: Northwest Territories Métis Nation

OMG: Otipemisiwak Métis Government

SGC: Standard Geographical Classifications

TAID: Transformational Approach to Indigenous Data

UNDRIP: United Nations Declaration on the Rights of Indigenous Peoples



B : Demonstration Projects

B.1 Métis Data Dashboard

The Métis Data Dashboard (“the Dashboard”) is a practical tool designed to improve access to census data for Métis Governments. It allows users to explore, analyze, and visualize census data to support decision-making, service delivery, and data sharing among Métis Governments. The Dashboard is built on the largest custom tabulation of data ever conducted by Statistics Canada, providing Métis Governments with access to over 300 gigabytes of tailored socio-economic data regarding Métis people.

Objectives

The primary objective of the Dashboard is to make census data more accessible and useful for Métis Governments, allowing them to interact with relevant information specific to their governance and service delivery needs. The infrastructure is scalable, meaning additional datasets—such as those related to environment, health, or education—can be integrated over time, helping Métis Governments meet various policy and program objectives. A secondary objective of the Dashboard is to enable and support data sharing among Métis Governments. The Dashboard is set up to allow Métis Governments to view data about Métis people in their regions. To access and compare these data with information from other regions, Métis Governments must enter into a data-sharing agreement with other Métis Governments. This feature is intended to build trust with users, demonstrating how, if they choose to upload their own data, it will be kept secure and can only be accessed and viewed by other users if a data-sharing agreement is executed.

Key Features

- **Custom Tabulation of Data:** The Dashboard is built on a large, customized data tabulation from Statistics Canada, providing Métis Governments with Métis Data relevant to their regions.
- **Data Exploration and Visualization:** The Dashboard allows users to access, explore, and visualize data in a consistent and user-friendly manner. It enables flexible analysis by allowing Métis Governments to include or exclude census variables as needed and view results in formats like charts and tables. This level of customization and accessibility surpasses what is typically available from sources like Statistics Canada.
- **AI-Driven Analysis Tool:** The tool uses artificial intelligence (AI) to help users analyze patterns and trends in the data, making it easier to extract meaningful insights. The objective of the inclusion of this tool is to leverage the rapid progress in the AI space



as part of the Dashboard. The tool can produce some unexpected results but has progressively improved and is expected to benefit from progress being made in the AI space generally, at no additional cost.

- **Custom Geography Integration:** Through the use of custom concordance tables, the Dashboard aligns census subdivision data with the specific geographic boundaries of each Métis Government. This allows Métis Governments to view and work with data that are directly relevant to their regions.
- **Privacy and Data Control:** Data-sharing agreements are embedded within the platform, giving Métis Governments control over provincial data related to their Citizens while building confidence in the privacy and security of the system to encourage future data uploads and an expansion of the utility of the system overall.
- **Potential for Expansion:** While the focus is currently on census data, the Dashboard is designed to incorporate additional datasets in the future. This flexibility will contribute to the development of data capacity across the Métis Nation, allow for easy data analysis and sharing, and provide a space to store, view, and utilize any datasets deemed appropriate for inclusion.

Strategic Value

The Dashboard allows Métis Governments to access and use relevant data without relying on external entities like Statistics Canada. It streamlines the process of getting information, attempting to close the gap between expert data users and policy area experts, and provides a user-friendly platform for analyzing data. By giving Métis Governments control over how data are accessed and used, the Dashboard supports Métis Data Sovereignty and helps Métis Governments make more informed decisions. Finally, the Dashboard demonstrates to government partners the type of products that the Métis Nation can develop on short timelines and tight budgets to serve practical needs.

Impact and Benefits

- **Direct Access to Data:** The Dashboard gives Métis Governments immediate access to relevant data, reducing delays and improving data availability for decision-making.
- **Supports Service Delivery:** By providing detailed, tailored data, the Dashboard helps Métis Governments better understand and meet the needs of their Citizens.
- **Collaboration and Flexibility:** The Dashboard promotes collaboration between Métis Governments by providing a shared platform while allowing regional customization and control.



- **Long-Term Capacity Building:** The Dashboard helps build data capacity by providing Métis Governments with the tools and infrastructure needed to collect, manage, and use data effectively.

Challenges and Future Steps

The custom tabulation from Statistics Canada took longer than anticipated, highlighting the need for more efficient data-sharing processes. Currently, the Dashboard relies on self-identified census data from Statistics Canada. Using self-identifying individuals as a proxy for Métis Citizens is problematic, as self-identification often does not align with the citizenship criteria established by Métis Governments. The inclusion of the new membership variable in the 2021 Census of Population provides a partial solution. This variable asks self-identifying Métis respondents whether they are members of a Métis organization or settlement and specifies which one, enabling Métis Governments to assess how closely self-identification data aligns with their understanding of their Citizens. Looking forward, the Dashboard will integrate additional datasets and continue supporting Métis Governments to ensure they can fully utilize its features.

B.2 : Métis Data Governance Toolkit

The Métis Data Governance Toolkit (“the Toolkit”) is a guide designed to support Métis Governments in establishing and implementing data governance frameworks. A data governance framework provides a blueprint to implement an organization’s data governance program. The Toolkit collates information on four core elements of a data governance framework (principles and goals; roles and responsibilities; laws, policies, and procedures; and monitoring, reporting, and evaluation), supplemented with scenario-based examples, templates, and additional resources.

Objectives

The Toolkit’s primary objective is to help Métis Governments develop a data governance framework through which Métis Governments can weave their unique values and priorities. Proper data governance ensures that Métis Governments can use data to inform their governance for the benefit of their Citizens, while safeguarding collective and individual rights to privacy and confidentiality.

Key Features

The Toolkit outlines four core elements that should be addressed within data governance frameworks and provides guidance for each:



- **Principles and Goals:** Establishing the overarching thought leadership and guidance for data governance, including both guiding principles and tangible objectives.
- **Roles and Responsibilities:** Describing the personnel and patterns that support accountability for data governance, such as the responsibilities of key staff positions, and any working structure (e.g., committee) empowered to make decisions related to data.
- **Laws, Policies, and Procedures:** Articulating the “rules” of data governance – the expectations and requirements that describe how the purposes, vision, goals, and principles of a data governance program are defined and are to be carried out.
- **Monitoring, Reporting, and Evaluation:** Defining how it is known that the data governance program is working and what needs to be strengthened, such as through establishing and reporting against metrics and processes and acting upon results to achieve improvement.

The Toolkit also contains:

- **Scenarios and Practical Examples:** Each core element is illustrated through scenarios involving a fictional Métis government called the “Kiishitow Government” (“Kiishitow” meaning “fictional” in Michif). These scenarios demonstrate how the elements of data governance can be applied in practice.
- **Additional Resources:** To support understanding and implementation, the Toolkit provides practical resources such as templates, examples, and additional guides for developing a data governance framework.

Strategic Value

Data governance and accountability is one of the six Themes or areas of data capacity highlighted in the Strategy as being necessary to safely and successfully achieve our Vision. Ultimately, the Toolkit supports Métis Governments in implementing a data governance framework and exercising sovereignty over Métis Data at every stage of the data lifecycle.

Impacts and Benefits

- **Collaboration and Autonomy:** The Toolkit recognizes each Métis Government's right to establish their own data governance frameworks to align with their unique objectives and needs. At the same time, it highlights the benefits of collaboration to enable data interoperability, support comparability among the Métis Nation, create economies of scale, and foster knowledge-building and innovation.
- **Long-Term Capacity Building:** The Toolkit helps build data capacity by supporting Métis Governments in developing policies and procedures to govern Métis data



collection, use, and stewardship in a manner aligned with Métis values and that builds trust with and respects Métis Citizens.

Challenges and Future Steps

As representatives of an Indigenous People with unique and constitutionally protected rights, Métis data governance programs include unique responsibilities and need to enable data sovereignty within the context of a historic and contemporary colonial state. The primary challenge in developing the Toolkit was determining how to provide guidance that balanced Métis Government's responsibilities and needs while ensuring interoperability with broader data governance frameworks and alignment with federal and provincial laws.

Data governance frameworks provide a blueprint for developing data governance programs. Future steps in this area could include working with Métis Governments to apply the Toolkit to develop the specific components of their data governance programs. For example, this may involve the development of Métis-specific data sovereignty and governance principles or Privacy and Confidentiality policies.

B.3 : Métis Primary Data Dashboard

The Métis Primary Data Dashboard is a web platform designed to host the data that would be collected through a Métis Government-run census of their population. The Primary Data Dashboard allows Métis Governments and Institutions to explore these data through an accessible, user-friendly interface. At this stage, the Primary Data Dashboard contains synthetic data representing a hypothetical Métis census. It is a generic product that Métis Governments can access and tailor when data are collected.

Objectives

The primary objective of the Primary Data Dashboard is to demonstrate the value of conducting a Métis census by highlighting the kind of data that could be made available to Métis Citizens, Governments, and Institutions, while also providing a tool to disseminate that data once a census is complete. The data from a Métis census could be used to inform governance, including decision-making, investment, advocacy, planning, and evaluation for the benefit of Métis Citizens. Secondary objectives of the Primary Data Dashboard include initiating discussions on the type of statistics and indicators a Métis census should include and developing digital infrastructure that will allow Métis Citizens, Governments, and Institutions to benefit from improved primary data collection capacity. Currently the Primary Data Dashboard allows users to explore hypothetical question and response data through



interactive charts, tables, and a key takeaways page. These features illustrate the potential insights a Métis census could provide and how such data might be accessed and shared.

Key Features

- **Key Takeaways:** The landing page is designed to quickly communicate the most important insights from the census data. The communications in this overview are tailored to a public, non-technical audience with transparency and succinct information delivery in mind. This feature enables Métis Governments to effectively communicate key priority areas supported by data.
- **Data Summary:** Provides an in-depth look at key questions from the Métis census, featuring interactive charts and tables with hover features for easy interpretation and filters to explore data by demographic categories. These tools support Métis Governments in quickly accessing, analyzing, and visualizing data.
- **Exportability:** Users are able to download a .csv file of the data, ensuring Métis Governments have unrestricted access to the data for their specific needs.

Strategic Value

The Primary Data Dashboard will contribute to improved Métis Data Capacity by motivating meaningful discussions around a Métis census and offering a foundation for future primary data initiatives. It provides a practical example of how data infrastructure can be designed and used to support Métis Governments' decision-making, planning, and governance. The Primary Data Dashboard enables Métis Governments to own, manage, and access their data, supporting Métis Data Sovereignty and ensuring control over the collection, interpretation, and use of data in alignment with Métis priorities and values.

Impacts and Benefits

- **Collaboration and Flexibility:** The Primary Data Dashboard promotes collaboration between Métis Governments by providing a shared platform that can facilitate conversations around Métis census design.
- **Long-Term Capacity Building:** To help build data capacity, the platform provides Métis Governments with the infrastructure needed to collect, manage, and use Métis census data effectively.
- **Building Trust Through Transparency:** The Primary Data Dashboard shares the collected data back to Métis Citizens strengthening and building trust between the Métis Government and the community in what data was collected and how it will be used to inform governance.



Challenges and Future Steps

The content and potentially visualizations of the Primary Data Dashboard will need to be amended once a Métis census has been conducted to reflect new insights or variables. Additionally, the Primary Data Dashboard is currently designed to display the data of a single census. If additional Censuses are conducted and there is an interest in displaying the data over time, the tool will need to be updated to support multi-year displays.

B.4 : Population Projections & Dashboards

The population projections and accompanying Métis Government-specific dashboards are custom demographic projections that consider the unique drivers of Métis Citizen populations. Providing these projections in an interactive and adjustable format through individual dashboards allows Métis Governments to help project demand for services and programs, support advocacy efforts for treaty and resource negotiations, and inform future costing models and funding formulas. Currently, the projections are based on census data from Statistics Canada but are designed to evolve, ideally leveraging Métis Citizen data to ensure greater accuracy and relevance.

Objectives

The primary objective of this tool is to support good governance within Métis Governments by enabling data-informed decision making for policy, resource planning, and advocacy. Through accurate population projections based on key demographic drivers, such as mortality, fertility, self-identification, and registration, users can adjust these assumptions and visualize their effects, helping them understand and anticipate demographic changes. This importantly, helps Métis Governments to align services and strategies with the evolving needs of Métis Citizens, ensuring that programs and policies are responsive, equitable, and forward-looking.

Key Features

- **Inclusion of Métis-specific Factors:** Métis Citizen populations have unique drivers of population growth compared to the general Canadian population. The model includes assumptions about fertility, mortality, intergenerational ethnic mobility, endogamy (in-marriage), latest registration age, and new registrants.
- **Individual Interactive Dashboards:** Users can adjust any of the assumptions to visualize the impacts of the changes on projected population growth. This interactivity helps users understand the drivers of demographic change and evaluate the impacts of different assumptions, such as lower fertility or higher endogamy.



- **Methods Reports:** Reports developed for each Contributing Métis Government provide detailed overviews of the methods used to build the population projections dashboards, including up-to-date estimates of population-related parameters such as fertility, mortality, registration, and self-identification trends. These estimates, derived from Statistics Canada census data, offer detailed insights tailored to each Métis Government's Citizens, helping users understand the data inputs driving the projections and the rationale behind key assumptions.

Strategic Value

Population projections enable Métis Governments to anticipate demographic trends, assess the impact of key initiatives, and plan for the future needs of their Citizens without relying on external data sources. The projections are adaptable and can be updated as new population data becomes available or in response to significant events such as updates to the Citizenship Acts of Métis Governments. Access to the tool and accompanying data enhance Métis Government's ability to access, manage, and use data effectively, strengthening their data sovereignty and decision making capacity.

Impacts and Benefits

- **Direct Access to Data:** The projections and dashboards gives Métis Governments immediate access to relevant data, improving the availability of data for decision making.
- **Supports Resource Planning:** The projections and dashboards provide detailed and tailored data to help Métis Governments better understand their Citizens and support advocacy and resource planning efforts.
- **Protection of Privacy:** Individual dashboards ensure the protection of sensitive Citizen data while allowing Métis Governments opportunities for regional customization and control.
- **Long-Term Capacity Building:** The projections and dashboards help build data capacity by providing Métis Governments with the tools and infrastructure needed to access, manage, and use data effectively.

Challenges and Future Steps

Developing accurate population projections for Métis Government requires access to Citizen-level data, including counts by sex, birth year, and registration year. Accessing this data has been a complex process, involving varying internal approvals, trust-building, and data-sharing agreements.



To address privacy and security concerns, safeguards have been implemented, such as individualized dashboards with Métis Government-specific logins and assurances of data disposal upon project completion. Once access to the data is possible, the next step will be to replace the current census-based projections with projections based on Citizen data to improve accuracy. This would incorporate more Métis-specific variables which are not captured in census data such as deaths in existing citizenship registries and accurate estimates of the number of new registrants joining each year as a result of reidentification/repatriation.

